



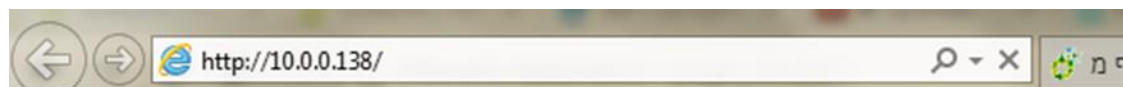
NETGEAR DGN2200v2



Primo Telecommunication

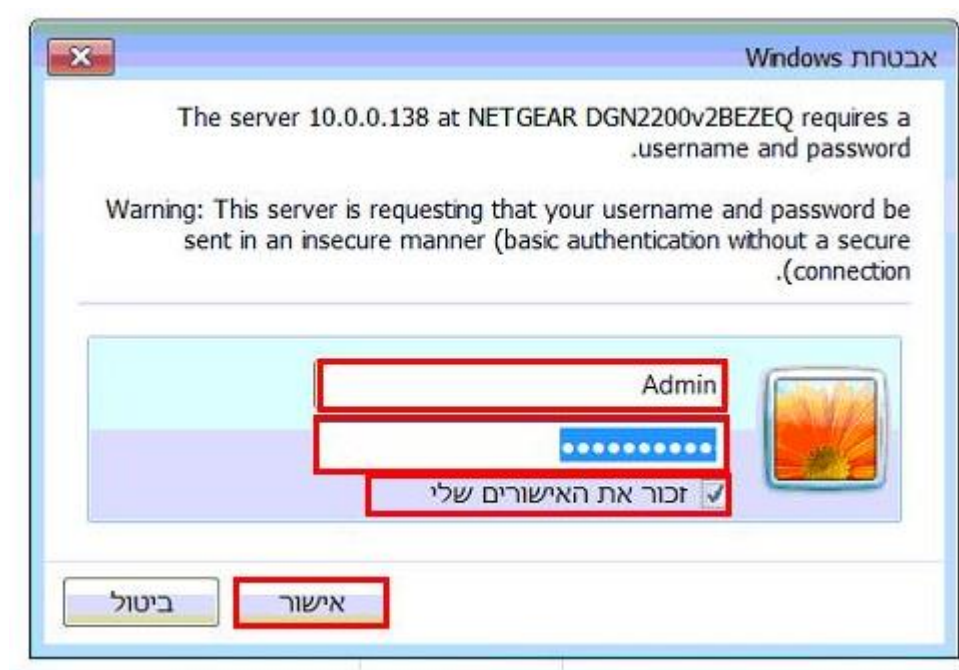
072-2467000 | support@099.net.i | www.099.net.il

Go To: 10.0.0.138



Username: Admin

Password: Admin



On The Left Panel, Go To: **Basic Settings**



Then You Have the **Login** And **Password** In The Middle Of The Page

The screenshot shows the Netgear SmartWizard configuration interface for a RangeMax Next Wireless-N Modem Router (model DGN2200). The 'Basic Settings' section is highlighted in red, showing the 'Login' field with the value 'user@099' and the 'Password' field with '*****'. The page includes a navigation menu on the left, a help section on the right, and various configuration options for PPPoE, IP address, and DNS.

Fill In the **Username** And **Password**, Then **Apply**.



Primo Telecommunication

072-2467000 | support@099.net.i | www.099.net.il



And Now The Router Is Configured.



Primo Telecommunication

072-2467000 | support@099.net.i | www.099.net.il